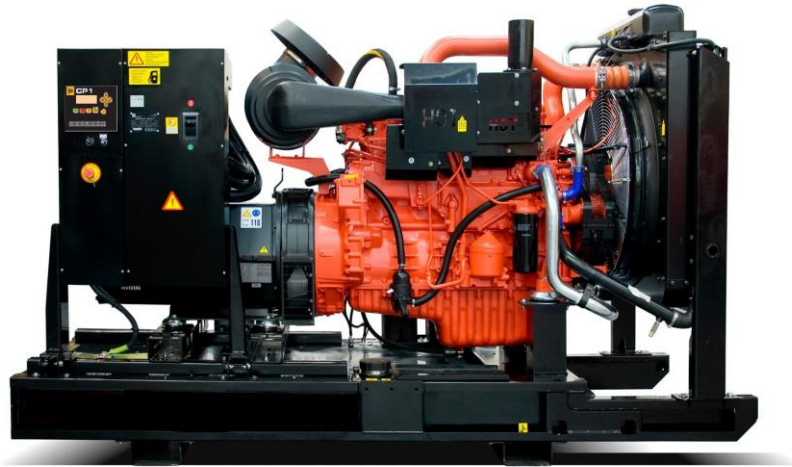


# G275X | G275QX



**DIESEL GENERATOR**

**FUEL OPTIMISED**

## ELECTRICAL

Frequency (Hz)	Phases	Voltage (V)	Prime		Standby		Rated Speed (RPM)
			kVA	kW	kVA	kW	
50	3	400/230V	250	200	275	220	1500
60	3	380/220V	284	227	313	250	1800
60	3	220/127V	284	227	313	250	1800
60	3	480/277V	284	227	313	250	1800

## POWER FACTOR

3 Phase	0.8
1 Phase	1

## ALL RATINGS ARE TO STANDARD REFERENCE CONDITIONS ISO 8528

**Prime:** This rating is for the supply of continuous electrical power, at variable load, in lieu of commercially purchase power. There is no limitation on the annual hours of operation and 10% over load power can be supplied for 1 hour in 12.

**Standby:** This rating is for the supply of continuous electrical power, at variable load, in the event of a utility power failure. No overload is permitted.

"Stage IIIa" models are only emissions compliant at 50Hz Prime Power in accordance with 97-68EC.

## FUEL CONSUMPTION

100% Load Prime	L/h	50Hz	49.67
75% Load Prime	L/h		37.25
50% Load Prime	L/h		25.75
100% Load Standby	L/h		55.59
100% Load Prime	L/h	60Hz	57.50
75% Load Prime	L/h		43.12
50% Load Prime	L/h		29.92
100% Load Standby	L/h		63.87

## EXHAUST SYSTEM

Maximum Temperature 100% Standby	°C	50Hz	428
Exhaust Gas Flow 100% Standby	kg/s		0.383
Maximum Allowed Back Pressure	mbar		-
Maximum Temperature 100% Standby	°C	60Hz	434
Exhaust Gas Flow 100% Standby	kg/s		0.467
Maximum Allowed Back Pressure	mbar		-

## AIR SYSTEM

Intake Air Flow 100% Standby	m <sup>3</sup> /h	50Hz	1115.00
Total Cooling Air Flow 100% Standby	m <sup>3</sup> /s		8.80
Alternator Fan Airflow	m <sup>3</sup> /s		0.533
Intake Air Flow 100% Standby	m <sup>3</sup> /h	60Hz	1368
Total Cooling Air Flow 100% Standby	m <sup>3</sup> /s		10.60
Alternator Fan Airflow	m <sup>3</sup> /s		0.65

## ENGINE

<b>1500 RPM</b>		
Output Rating (PRP)	kW	220
Output Rating (Standby)	kW	243
<b>1800 RPM</b>		
Output Rating (PRP)	kW	241.0
Output Rating (Standby)	kW	266.0
Manufacturer and Model	Scania DC9-72A (02-11)	
Fuel	Diesel	
Injection	Direct	
Aspiration	Turbo Charged and Aftercooled	
Cylinders	5	
Bore and Stroke	mm	130x140
Displacement	L	9.30
Cooling	Water	
Engine Oil Specification	ACEA E3, E4, E5 or E7	
Compression Ratio	16:1	
Engine Oil Capacity	L	38.00
Coolant Capacity	L	57.00
Governor	Electronic	
Air Filter	Dry	
Engine Oil Consumption	100% Load	0.2 g/kWh

## FUEL SYSTEM

Diesel Specification	EN590	
----------------------	-------	--

## ALTERNATOR

Poles	4
Winding Connections	Star
Insulation	Class H
Enclosure	IP23
Exciter System	Self-excited brushless
Voltage Regulator	AVR (electronic)
Steady State Voltage Regulation	+/- 1.0%
Bearing	Single bearing
Coupling	Flexible disc
Cooling	Direct drive centrifugal blower fan
Coating	Winding Protection Grey

## STARTING SYSTEM

Starter Motor	kW	5.5
Auxiliary Voltage	V	24
Number of Batteries		2

## BATTERY FEATURES

Battery Isolator	●
Battery Size (Ah)	75
Number of Batteries	2
Battery Charger	●

Standard: ●      Not Available: x      Optional: Δ

## MECHANICAL FEATURES

Cooling Pack	●
Air Filter	●
Mechanical Governor	x
Electronic Governor	●
High Coolant Temperature Sender	x
Low Oil Pressure Sender	x
Advanced Coolant Temperature Sender	●
Advanced Oil Pressure Sender	●
Oil Temperature Sender	●
Water Level Sender	●
Radiator Guards	●
Hot Component Guards	●
Water Jacket Heater	●
Manual Fuel Fill	Δ
Electric Fuel Fill	Δ
Racor Fuel Filter (No Alarm)	Δ
Racor Fuel Filter (With Alarm)	Δ
Pre-Filter with Separator	x
External Spark Arrestor	Δ
Fuel Level Sender	●
Industrial Silencer	●

Standard: ●      Not Available: x      Optional: Δ

## ELECTRICAL FEATURES

AVR DSR	●
AVR DER	x
Winding Protection Standard	x
Winding Protection Standard +	x
Winding Protection Grey	●
Winding Protection Total	Δ
Winding Protection Total +	Δ
MAUX	●
PMG	Δ
Anti-Condensation Heater	Δ
Miniature Circuit Breaker (Integrated busbar)	x
Moulded Case Circuit Breaker (with integrated busbar)	●
Earth Leakage Protection (Shunt Trip)	●
Synchronisation	Δ
Preparation for Earth Spike	●
Remote Screen	Δ
Panel Door Micro Switch	Δ
Copper Busbar/Tails	Δ
Emergency Stop Button	●
Standard: ●      Not Available: x      Optional: Δ	

## JCB COMMUNICATION AND CONTROL

CPI	Δ
CP2	Δ
ATP	Δ
DSE7320	●
LiveLink for Power	●
Standard: ●      Not Available: x      Optional: Δ	

## SYNCHRONISATION PANEL

DSE8610	Δ
DSE8620	Δ
Standard: ●      Not Available: x      Optional: Δ	

## REFERENCE STANDARDS

JCB Generators are CE certified and conform to the following Directives (subject to a country requiring such standard):

- EN 12100, EN13857, EN60204
  - 2006/42/CE Machinery safety
  - 2006/95/EC Low voltage
  - 2004/108/CE Electromagnetic compatibility
  - 2000/14/EC Sound Power Level (amended by 2005/88/EC)
  - 97/68/EC Emissions(amended by 2002/88/EC & 2004/26/EC)
  - Power according to ISO 8528 and ISO 3046
  - Ambient reference conditions 1000mbar, 25°C, 30% relative humidity ISO3046
- Information based on standard specification equipment unless otherwise stated.

## WEIGHT AND DIMENSIONS – OPEN SET

Length	mm	3000
Width	mm	1160
Height	mm	1759
Shipping Volume (sea ready)	m <sup>3</sup>	6.12
Weight*	Kg	2172

\*Standard build with all fluids except fuel

## WEIGHT AND DIMENSIONS – CANOPY SET

Length	mm	3800
Width	mm	1400
Height	mm	2253
Shipping Volume (sea ready)	m <sup>3</sup>	11.99
Weight*	Kg	3434

\*Standard build with all fluids except fuel

## SOUND PRESSURE (CANOPY ONLY)

LpA (7m)	50Hz	dB(A)	68
LpA (7m)	60Hz	dB(A)	68

## FUEL TANK

	Material	Capacity (L)
Open Set	Steel	449
Canopy Set	Steel	449

## CANOPY FEATURES

Lockable Maintenance Access Doors	●
Control Panel Viewing Window	●
Fork Pockets	●
Single Lift Point	●
Rental Sledging Base	△
Bunding	●
Bund Level Indicator	△
50mm Rock Wool Sound Insulation	●
Yellow Paint	●
Red Paint	△
White Paint	△
Manual Oil Drain Pump (Canopy)	●
Residential Silencer	●
3 Way Fuel Valve and Coupling Nest	△
Socket Box (inclusive of heavy duty busbar & micro switch)	△
External Emergency Stop Button	●

Standard: ●      Not Available: x      Optional: △